

# HINT Report

## Weekly Disease Surveillance Report

KEY INDICATORS<sup>1,2</sup> | MMWR WEEK 11<sup>3,4</sup> | 3/15/15 TO 3/21/15

### Syndromic Indicators

Respiratory syndromes represented the largest number of cases for the week

- Cases peaked on Wednesday, March 18<sup>th</sup>, 2015
- Cases increased by 14.19% compared to last week (↑)
- Cases increased by 46.91% compared to last year<sup>5</sup> (↑)
- Overall cases have been trending upward (↑1 week)

Gastrointestinal syndromes represented the second largest number of cases for the week

- Cases peaked on Sunday, March 15<sup>th</sup>, 2015
- Cases decreased by 2.24% compared to last week (↓)
- Cases increased by 17.59% compared to last year (↑)
- Overall cases have been trending downward (↓1 week)

Respiratory syndromes represented the largest percentage weekly increase among all syndromes reported at 14.19%

### Department of Public Health

Office of Communicable Disease  
Surveillance and Epidemiology

75 Erievue Plaza, 3rd Flr

Cleveland, Ohio 44114

Office: 216/664-3747

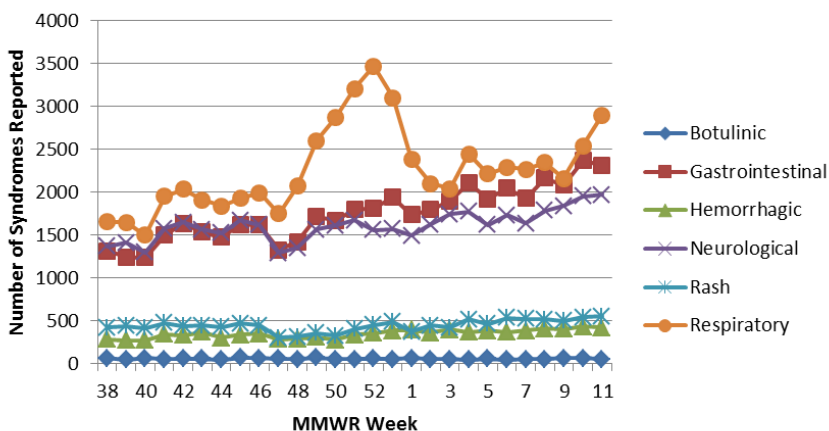
Fax: 216/664-6159

www.clevelandhealth.org



Disease Surveillance Report for  
MMWR Week 11

Figure 1: Syndromes by MMWR Week for Cuyahoga County Weeks 38 to Week 11 2014-2015



### Infectious Disease Symptoms Indicators

Cough symptoms represented the largest number of cases for the week

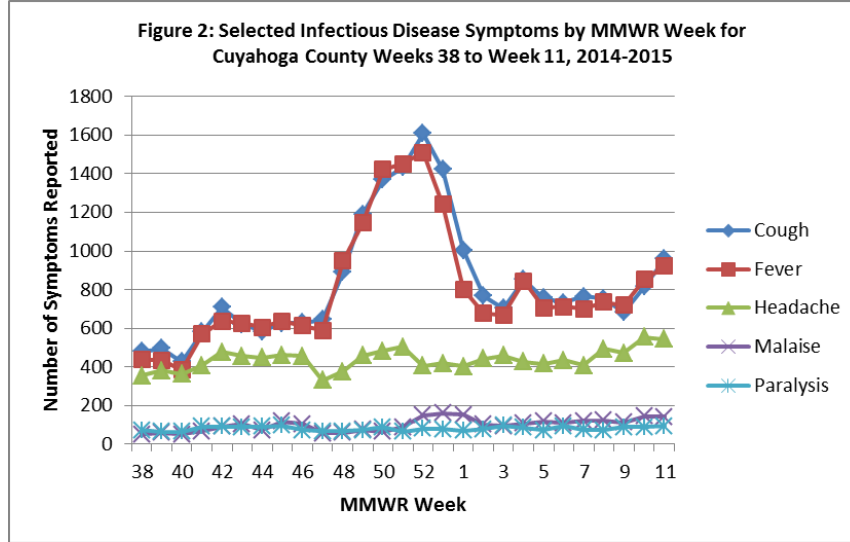
- Cases peaked on Wednesday, March 18<sup>th</sup>, 2015
- Cases increased by 17.52% compared to last week (↑)
- Cases increased by 76.94% compared to last year<sup>5</sup> (↑)
- Overall cases have been trending upward (↑1 week)

Fever symptoms represented the second largest number of cases for the week

- Cases peaked on Sunday, March 15<sup>th</sup>, 2015
- Cases increased by 8.22% compared to last week (↑)
- Cases increased by 57.07% compared to last year<sup>5</sup> (↑)
- Overall cases have been trending upward (↑1 week)

# HINT Report

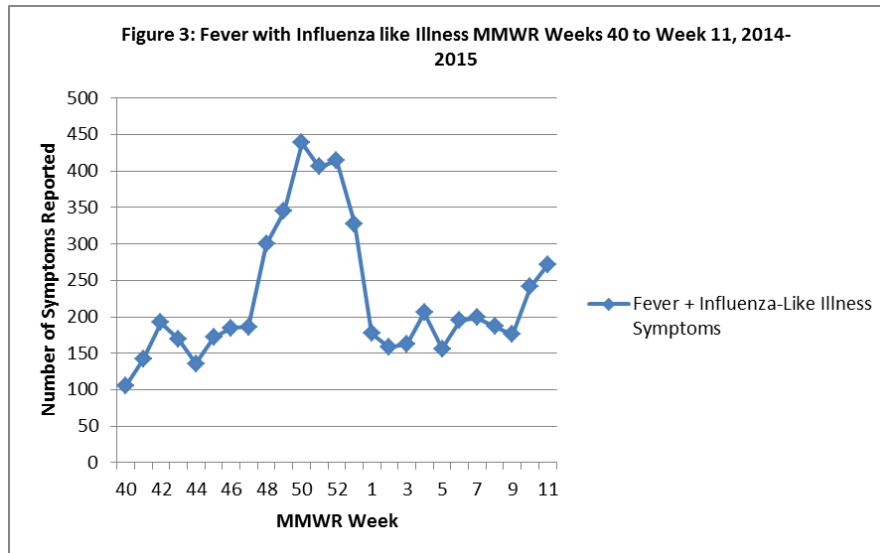
Cough symptoms represented the largest weekly increase among all symptoms reported at **17.52%**



## Influenza Indicators

Fever + Influenza like Illnesses reported for this week:

- Cases peaked on Sunday, March 15<sup>th</sup>, 2015
- Cases increased by 12.45% compared to last week (↑)
- Cases increased by 77.12% compared to last year (↑)
- Overall cases have been trending upward (↑1 week)



<sup>1</sup>Source: Ohio EpiCenter and the Ohio Disease Reporting System (ODRS)

<sup>2</sup>Key indicators are select illness classifications among Cuyahoga County residents who visited the hospital. The data are reported in real-time. Residents can be classified into more than one illness classification. Data has been conditioned for day-of-week effect.

<sup>3</sup>MMWR Week Fact Sheet: [http://www.cdc.gov/nndss/document/MMWR\\_Week\\_overview.pdf](http://www.cdc.gov/nndss/document/MMWR_Week_overview.pdf)

<sup>4</sup>2014 and 2015 MMWR Weeks: <http://www.clevelandhealth.org/Health/CommunicableDisease/Statistics.html> <sup>5</sup>

Comparison based upon 2014-2015 MMWR Week 11 and EpiCenter data from September 2014 through March 2015

<sup>6</sup>Source: Real-time Outbreak and Disease Surveillance (RODS)