

# HINT Report

## Weekly Disease Surveillance Report

KEY INDICATORS<sup>1,2</sup>|MMWR WEEK 32<sup>3,4</sup>|8/9/15 TO 8/15/15

### Syndromic Indicators

Neurological syndromes represented the largest number of cases for the week

- Cases peaked on Friday, August 14<sup>th</sup>, 2015
- Cases increased by 7.91% compared to last week (↑)
- Cases increased by 19.77% compared to last year<sup>5</sup> (↑)
- Overall cases have been trending upward (↑1 week)

Gastrointestinal syndromes represented the second largest number of cases for the week

- Cases peaked on Tuesday, August 11<sup>th</sup>, 2015
- Cases decreased by 1.49% compared to last week (↓)
- Cases increased by 8.47% compared to last year (↑)
- Overall cases have been trending downward (↓1 week)

Hemorrhagic syndromes represented the largest percentage weekly decrease among all syndromes reported at 8.84%

### Department of Public Health

Office of Communicable Disease  
Surveillance and Epidemiology

75 Erievue Plaza, 3rd Flr

Cleveland, Ohio 44114

Office: 216/664-3747

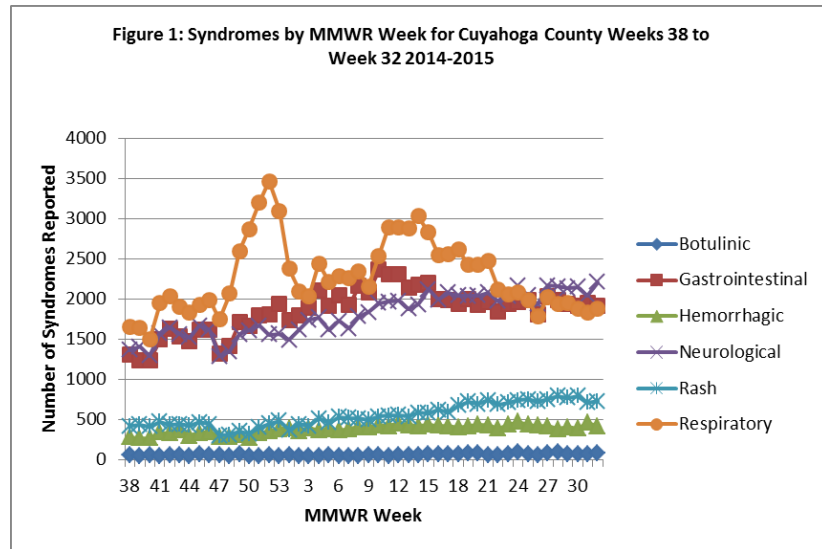
Fax: 216/664-6159

www.clevelandhealth.org



Disease Surveillance Report for  
MMWR Week 32

Figure 1: Syndromes by MMWR Week for Cuyahoga County Weeks 38 to Week 32 2014-2015



### Infectious Disease Symptoms Indicators

Headache symptoms represented the largest number of cases for the week

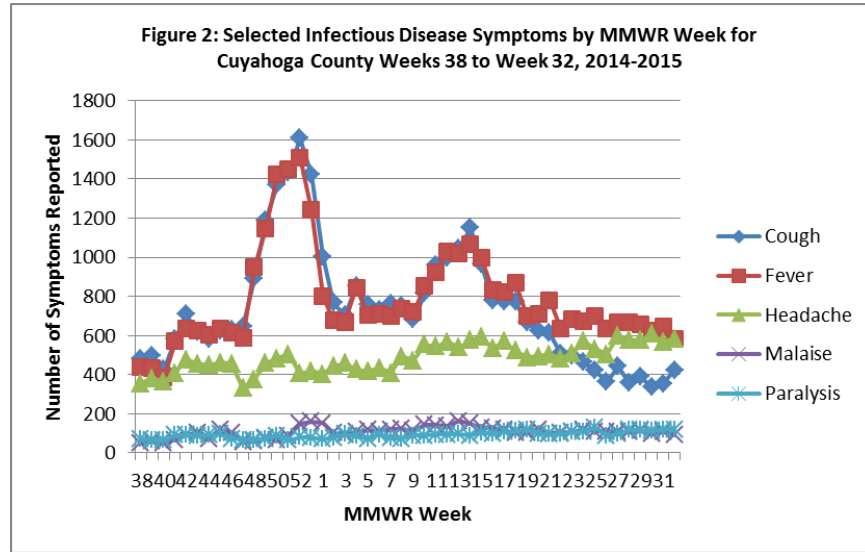
- Cases peaked on Friday, August 14<sup>th</sup>, 2015
- Cases increased by 2.46% compared to last week (↑)
- Cases increased by 19.22% compared to last year (↑)
- Overall cases have been trending upward (↑1 week)

Fever symptoms represented the second largest number of cases for the week

- Cases peaked on Sunday, August 9<sup>th</sup>, 2015
- Cases decreased by 10.32% compared to last week (↓)
- Cases stayed the same 0% compared to last year (=)
- Overall cases have been trending downward (↓1 week)

# HINT Report

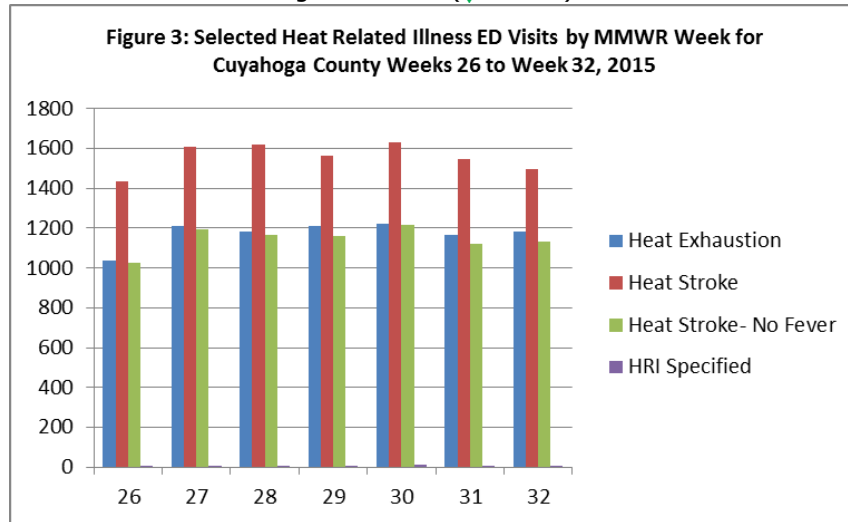
Malaise symptoms represented the largest weekly decrease among all symptoms reported at 17.27%



## Heat Related Illness Indicators

Heat Stroke represented the largest number of cases for the week:

- Cases peaked on Friday, August 14<sup>th</sup>, 2015
- Cases decreased by 3.36% compared to last week (↓)
- Cases increased by 9.21% compared to last year (↑)
- Overall cases have been trending downward (↓ 1 week)



<sup>1</sup>Source: Ohio EpiCenter and the Ohio Disease Reporting System (ODRS)

<sup>2</sup>Key indicators are select illness classifications among Cuyahoga County residents who visited the hospital. The data are reported in real-time. Residents can be classified into more than one illness classification. Data has been conditioned for day-of-week effect.

<sup>3</sup>MMWR Week Fact Sheet: [http://wwwn.cdc.gov/nndss/document/MMWR\\_Week\\_overview.pdf](http://wwwn.cdc.gov/nndss/document/MMWR_Week_overview.pdf)

<sup>4</sup>2014 and 2015 MMWR Weeks: <http://www.clevelandhealth.org/Health/CommunicableDisease/Statistics.html> <sup>5</sup>

Comparison based upon 2014-2015 MMWR Week 32 and EpiCenter data from September 2014 through August 2015

<sup>6</sup>Source: Real-time Outbreak and Disease Surveillance (RODS)