

## Current Season Summary:

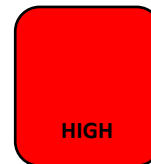
December 15 – December 21, 2019  
MMWR Week 51

This week, there were 237 emergency department visits for influenza-like illnesses out of 6,627 total visits to emergency departments, which is the highest proportion of visits seen in the past 5 years; there were 17 confirmed hospitalizations for influenza this week bringing the seasonal total to 45; and, there were 8 pneumonia- or influenza-related deaths out of 298 total deaths this week. One of the three indicators, influenza-like illnesses (*very high*) was elevated this week reducing the intensity threshold to *Low*.

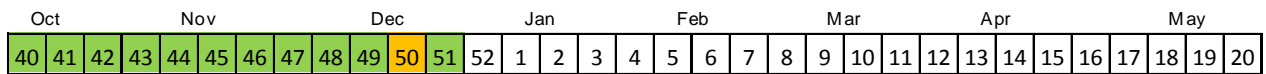
Influenza B is the predominant strain circulating this season. Affected populations are substantially younger than in the previous 5 seasons.

### Flu Intensity This Week

Flu activity this week was reduced to Low intensity.



### Seasonal Flu Intensity

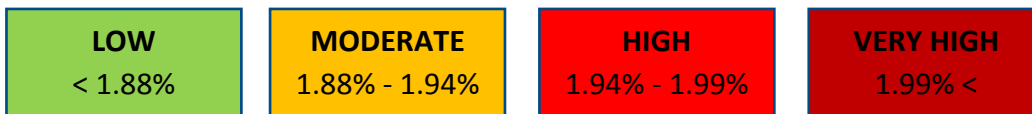
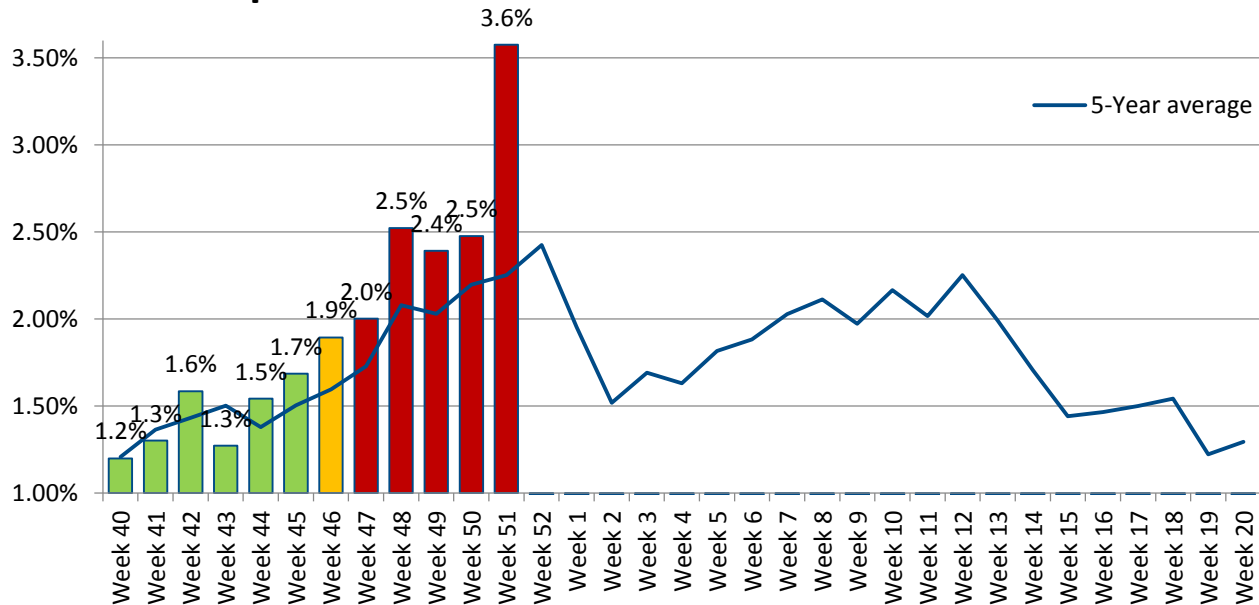


Flu Intensity Indicators	This Week n (%)	Season Total n (%)
<b>Emergency Department Visits for Influenza-Like Illnesses</b>	237 (3.58%)	1,467 (1.97%)
<b>Confirmed Influenza Hospitalizations</b>	17	45
<b>Pneumonia- &amp; Influenza-Related Deaths*</b>	8 (2.7%)	155 (4.5%)

\*Deaths represent all deaths for Cuyahoga County. All other data presented are City of Cleveland-specific. The three indicators for calculating the intensity threshold are based [on 2017 methodology from the Centers for Disease Control and Prevention](#).

## Influenza-Like Illnesses

**Figure 1: 2019-2020 Proportion of Emergency Department Visits for Influenza-Like Illnesses**



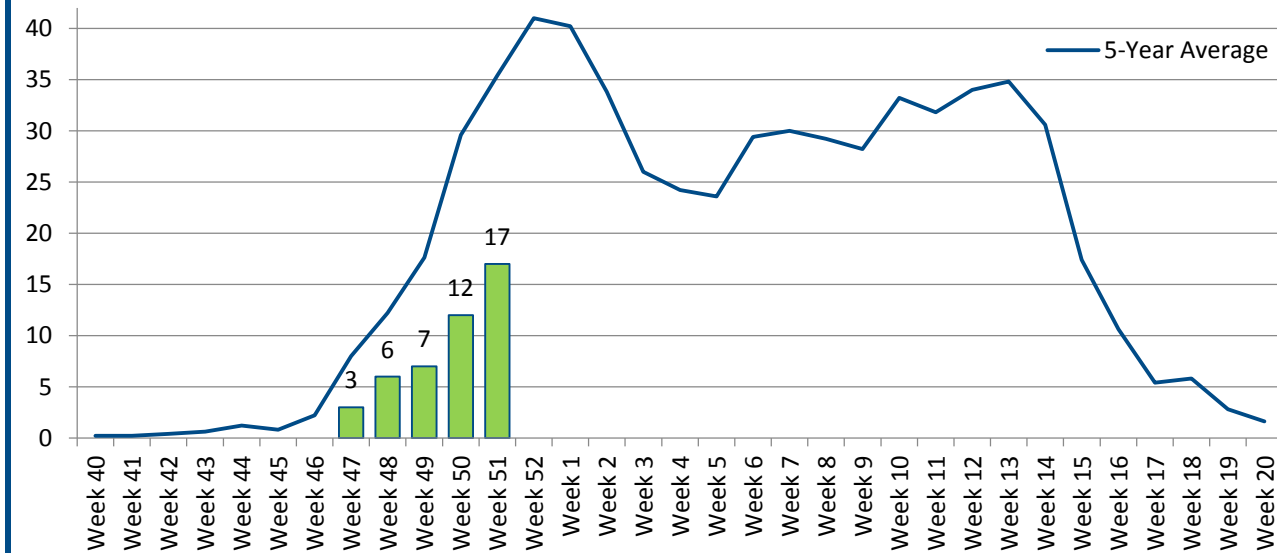
The proportion of Emergency Room visits for influenza-like illnesses remains elevated beyond the what has been observed in 5 years. This week 50% of visits were among males. Regarding race and ethnicity, 32% of visits were Black or African American individuals; 21% were among White or Caucasian individuals; and nearly a third (28%) of visits were among other racial groups. About one fourth (23%) of visits were among Hispanic or Latino individuals. The median age was 5 years .

Data Source: Health Monitoring Systems: EpiCenter 3.5.17. Data extracted on 12/23/2019.

Low, Moderate, and High intensity thresholds are defined as the 50%, 90%, and 99% Confidence Intervals, respectively, based on the 5-Year Average of previous seasons

## Hospitalizations

**Figure 2. 2019-2020 Confirmed Influenza-Associated Hospitalizations**



**LOW**  
< 22.71

**MODERATE**  
22.71 – 25.05

**HIGH**  
25.05 – 27.29

**VERY HIGH**  
27.29 <

There have been 45 hospitalizations related to influenza to-date. The majority (66%) of these are Influenza B-related with 4 cases being the Victoria strain. One case tested positive for both Influenza A and Influenza B strains. Most cases (61%) occurred among Black or African Americans. Males (47%) and females (52%) were similarly affected.

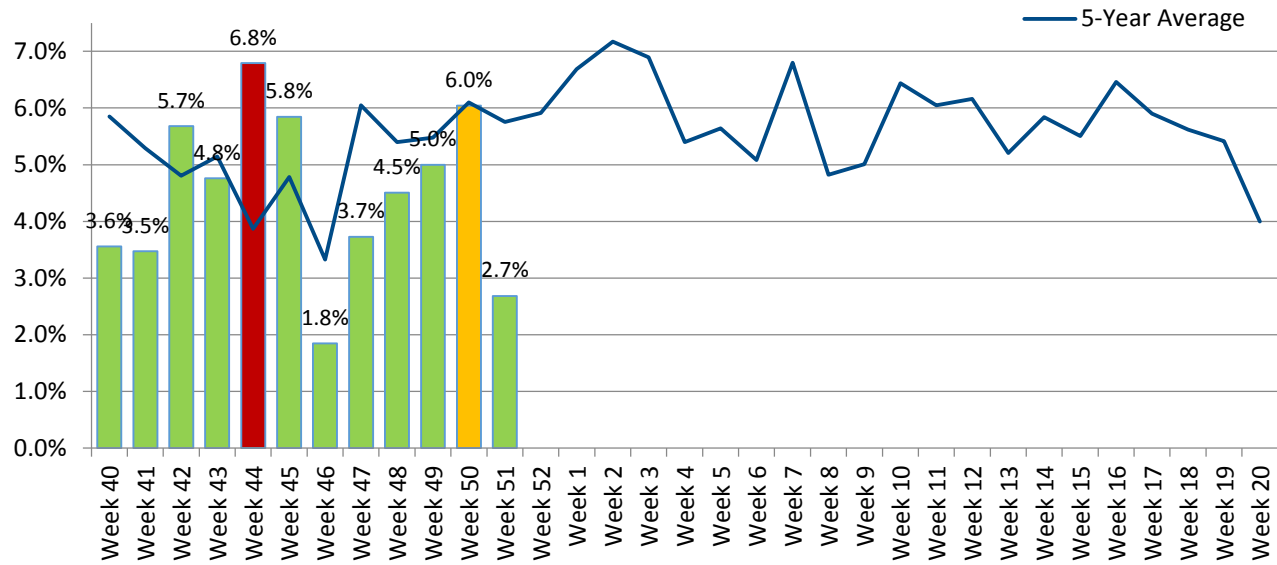
While the number of hospitalizations has remained relatively low, it is important to keep in mind that this season, younger populations appear to be affected most. Younger populations are less likely to be hospitalized. Among those hospitalized, the median age of cases this week was 32 years which is substantially younger than the 5-year median age of 60 years.

Data Source: Ohio Department of Health: Ohio Disease Reporting System. Data extracted on 12/26/2019. Data are preliminary and subject to change as more information is gained.

Low, Moderate, and High intensity thresholds are defined as the 50%, 90%, and 99% Confidence Intervals, respectively, based on the 5-Year Average of previous seasons

**Pneumonia- & Influenza-Associated Deaths\***

**Figure 3. Proportion of Deaths Associated with Pneumonia or Influenza**



<b>LOW</b> < 6.02%	<b>MODERATE</b> 6.02% - 6.19%	<b>HIGH</b> 6.19% - 6.34%	<b>VERY HIGH</b> 6.34%<
-----------------------	----------------------------------	------------------------------	----------------------------

The proportion of deaths due to pneumonia or influenza-related (P&I) illnesses is within the *low* threshold this week. Of all P&I deaths that have occurred this season, all are associated with pneumonia and not influenza. All deaths this week occurred among individuals aged 45 years and older. Almost all P&I deaths that occurred this week were among individuals aged 45 years and older. To-date, only 3 P&I deaths have occurred among younger age groups.

Data Source: Cleveland Department of Public Health Department of Vital Statistics. Data compiled on 12/23/2019.

\*Deaths represent all deaths for Cuyahoga County. All other data presented are City of Cleveland-specific

Low, Moderate, and High intensity thresholds are defined as the 50%, 90%, and 99% Confidence Intervals, respectively, based on the 5-Year Average of previous seasons