

Current Season Summary:

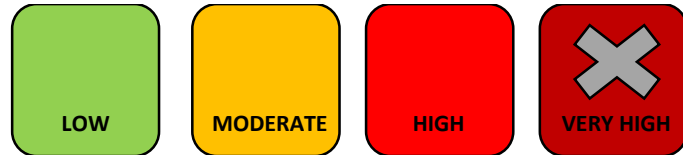
January 26 – February 1, 2020
MMWR Week 5

This week, there were 202 emergency department visits for influenza-like illnesses out of 6,825 total emergency departments visits for any cause; there were 95 confirmed hospitalizations for influenza this week bringing the seasonal total to 471[‡]; and, there were 28 pneumonia- or influenza-related deaths out of 352 total deaths* for any cause. There was one influenza outbreak noted in Week 5 bring the total number of outbreaks up to 3. All outbreaks occurred within Long-Term Care facilities.

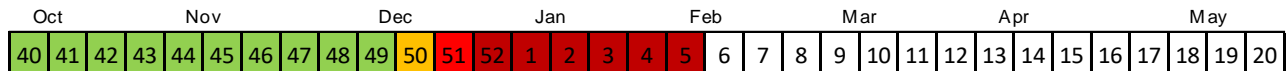
Influenza A is the predominant strain noted this week. Of those with known vaccination status, 64% of those with Influenza A were not vaccinated and 58% of those with Influenza B were not vaccinated. The CDC reports that this vaccine is a good match for the current circulating strain of Influenza A (H1N1 lineage).

Flu Intensity This Week

For the sixth week in a row, flu activity remains *Very High*



Seasonal Flu Intensity



Flu Intensity Indicators	This Week n (%)	Season Total n (%)
Emergency Department Visits for Influenza-Like Illnesses	202 (2.96%)	2,661 (2.31%)
Confirmed Influenza Hospitalizations[‡]	95	471
Pneumonia- & Influenza-Related Deaths*	28 (8.0%)	246 (4.6%)

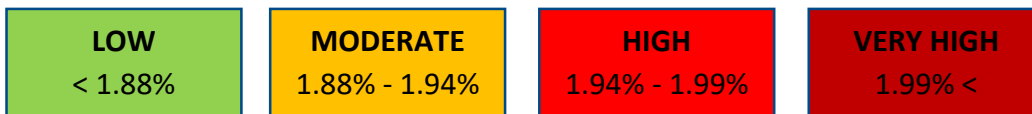
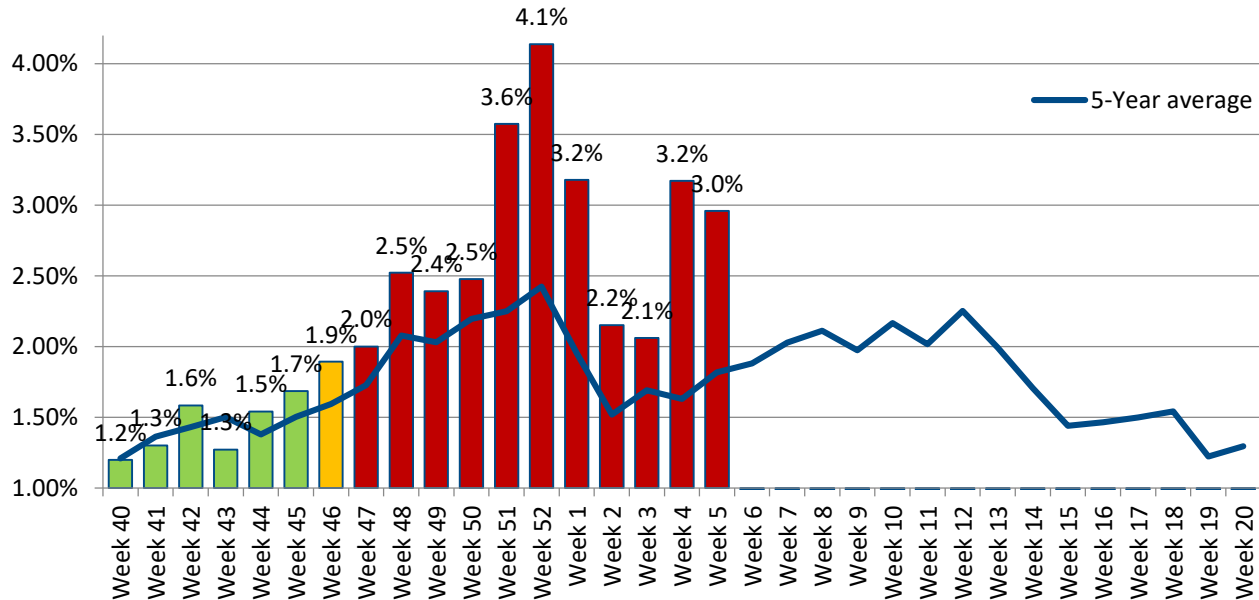
[‡] Due to the large number of hospitalizations and delays in reporting, methodology was updated in Week 1 to include cases that are still open but confirmed.

*Deaths represent all deaths for Cuyahoga County. All other data presented are City of Cleveland-specific. Data are preliminary and subject to change as more information is gained.

The three indicators for calculating the intensity thresholds are based [on 2017 methodology from the Centers for Disease Control and Prevention.](#)

Influenza-Like Illnesses

Figure 1: 2019-2020 Proportion of Emergency Department Visits for Influenza-Like Illnesses



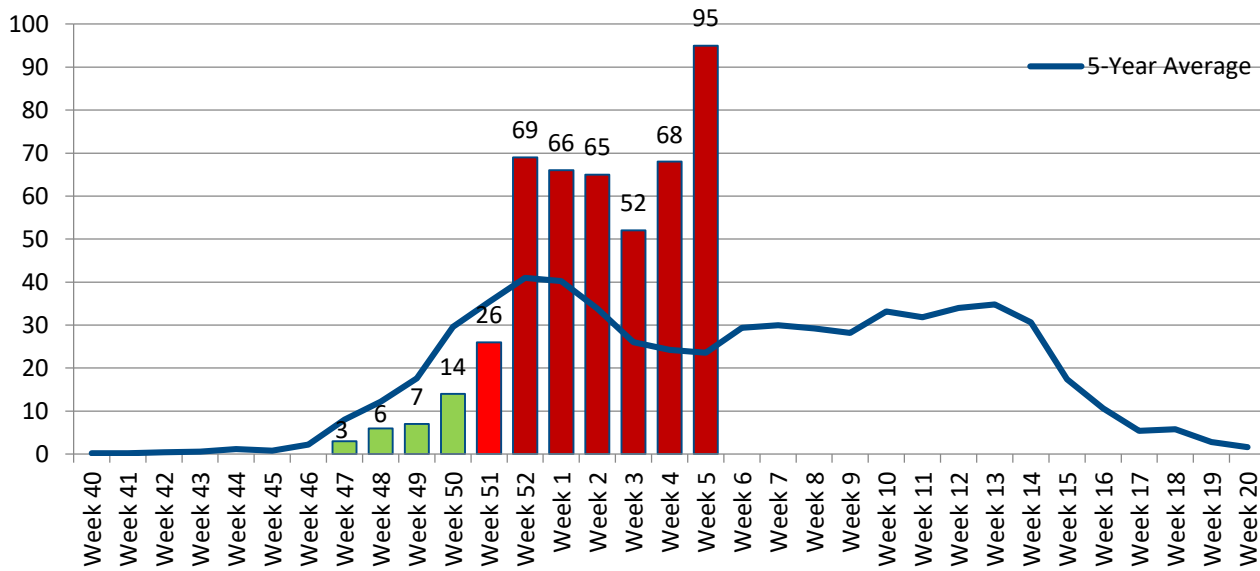
The proportion of Emergency Room visits for influenza-like illnesses remains elevated beyond what has been observed in 5 years. This week 51% of visits were among females. Regarding race and ethnicity, 29% of visits were Black or African American individuals; 21% were among White or Caucasian individuals; and more than a third (41%) of visits were among other racial groups. Nearly a third (32%) of visits were among Hispanic or Latin individuals. The median age this week remains 6 years.

Data Source: Health Monitoring Systems: EpiCenter 3.5.18. Data extracted on 2/10/2020.

Low, Moderate, and High intensity thresholds are defined as the 50%, 90%, and 99% Confidence Intervals, respectively, based on the 5-Year Average of previous seasons

Hospitalizations

Figure 2. 2019-2020 Confirmed Influenza-Associated Hospitalizations[¥]



LOW
< 22.71

MODERATE
22.71 – 25.05

HIGH
25.05 – 27.29

VERY HIGH
27.29 <

The number of hospitalizations remains above four times greater than what has been observed over the past 5 years. Influenza A is the predominant strain currently, which was observed among 83% of cases this week. This week, most cases (54%) occurred among Black or African Americans, 36% were among White or Caucasian populations, and 6% were among Hispanic or Latinx populations, which is similar to what has been observed this season. A little more than half (51%) of all hospitalizations were among females this week. The median age of cases this week was 52 years of age.

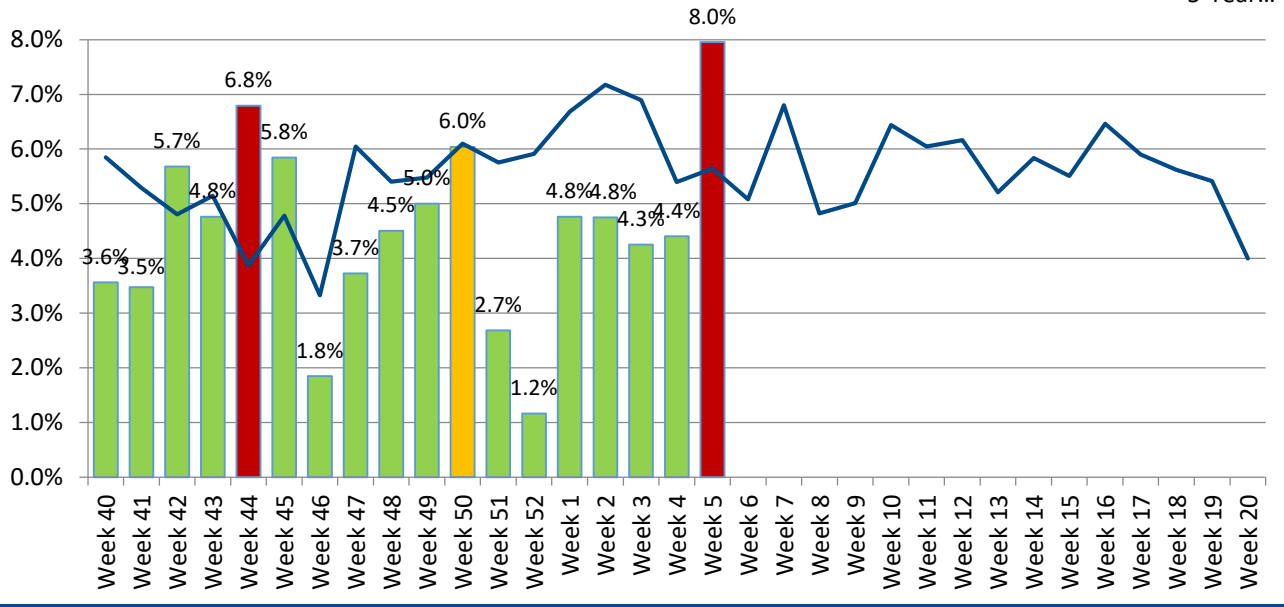
Data Source: Ohio Department of Health: Ohio Disease Reporting System. Data extracted on 2/10/2019. Data are preliminary and subject to change as more information is gained.

[¥] Due to the large number of hospitalizations and delays in reporting, methodology was updated in Week 1 to include cases that are still open but confirmed.

Low, Moderate, and High intensity thresholds are defined as the 50%, 90%, and 99% Confidence Intervals, respectively, based on the 5-Year Average of previous seasons.

Pneumonia- & Influenza-Associated Deaths*

Figure 3. Proportion of Deaths Associated with Pneumonia or Influenza



LOW < 6.02%	MODERATE 6.02% - 6.19%	HIGH 6.19% - 6.34%	VERY HIGH 6.34%+
-----------------------	----------------------------------	------------------------------	----------------------------

There have been 246 deaths this season due to pneumonia or influenza-related illnesses (P&I). The proportion of P&I deaths is within the *very high* threshold this week. This week, the data show the 4 additional influenza specific-related deaths yielding a seasonal total of 11 with one being among an individual younger than 18 years of age. None of the influenza-related deaths this week occurred within the City of Cleveland. The majority P&I deaths that occurred this season were among individuals aged 45 years and older although this week 3 deaths were among individuals younger than 45 years. To-date, 11 P&I deaths have occurred among younger age groups.

Data Source: Cleveland Department of Public Health Department of Vital Statistics. Data compiled on 2/4/2020. Data are preliminary and subject to change as more information is gained.

*Deaths represent all deaths for Cuyahoga County. All other data presented are City of Cleveland-specific.

Low, Moderate, and High intensity thresholds are defined as the 50%, 90%, and 99% Confidence Intervals, respectively, based on the 5-Year Average of previous seasons.